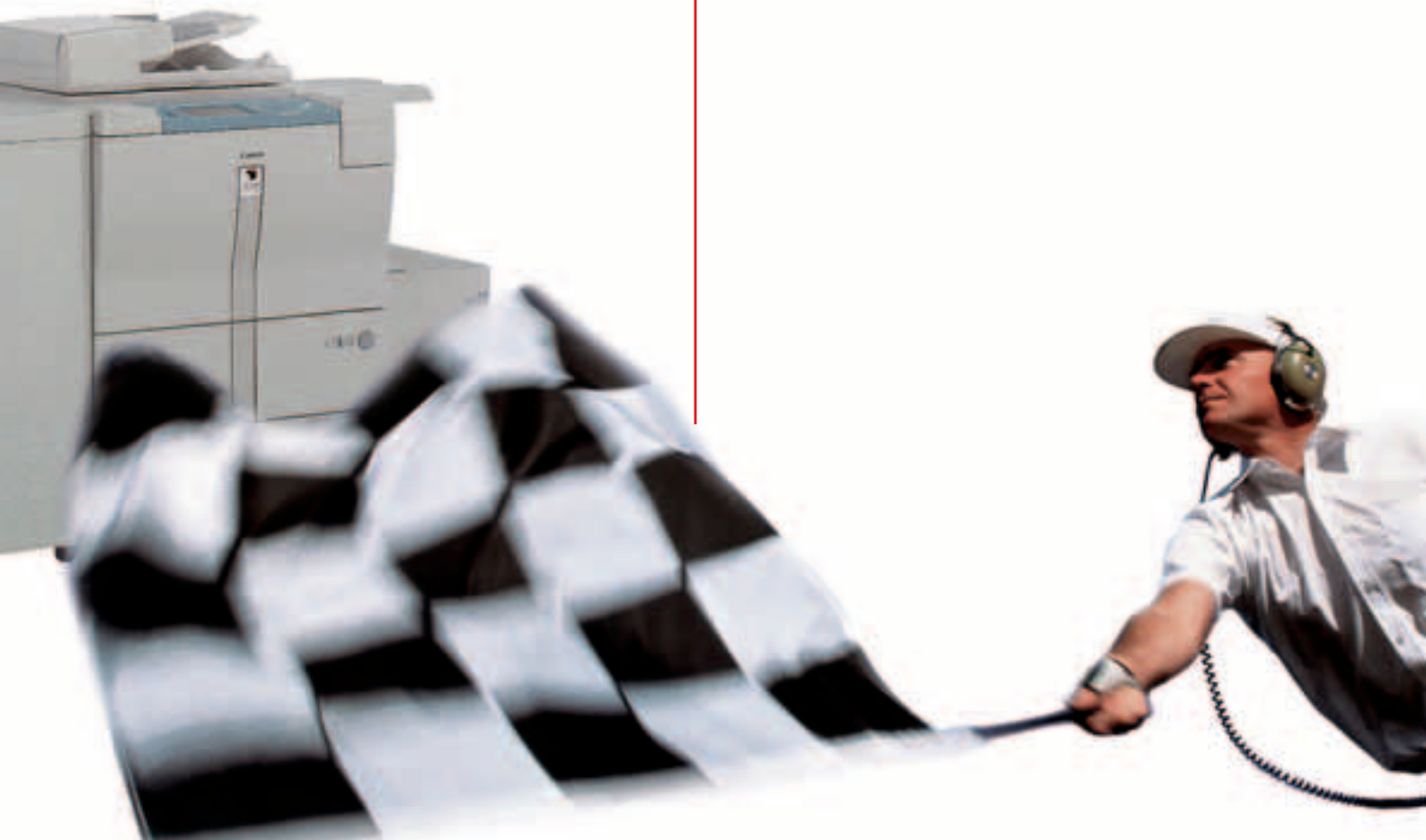


you can  
**Canon**

**iR 7200**

Digital Network  
Production System

Win every time with  
high quality, high speed  
short-run print work



*A complete print-on-demand solution  
delivering high quality, short-run jobs*

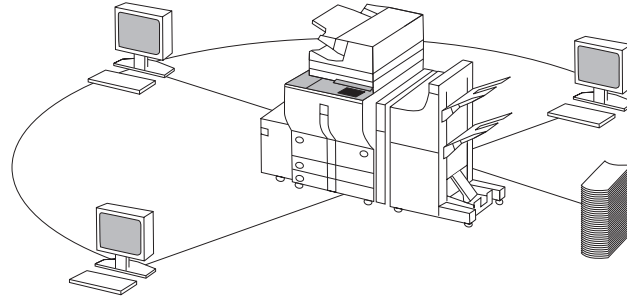


The Canon iR7200 system brings unparalleled ease and efficiency to on-demand, black-and-white document management. Designed for short-run jobs and repeat printing, where deadlines are critical, it instantly delivers the print quantity and image quality required, offering a reduction in time and costs compared to offset printing.

The highly compact and reliable design features an iR controller with Image Platform architecture. A modular structure speeds up copying, printing, scanning and all network operations. True multifunction processing handling data at high speeds to achieve extremely efficient control of document input, editing and output.

No assistance is needed from a dedicated operator to complete jobs, as the system combines a powerful image server with a web-based remote user interface and a range of professional on-line finishing options, providing complete control from all connected desktops. The iR7200 offers the ideal solution for central reprographic departments, departmental document centres and also the graphic industries.

*Win every time with high quality,  
high speed short-run print work*



### **Superior speed and image quality**

To achieve the highest levels of productivity, the iR7200 features high scanning speed technology - inputting documents at 55 ipm and 600 dpi. Output is a rapid 72 ppm (A4) with consistently high image quality equivalent to 1200 x 600 dpi for copying and 2400 x 600 dpi for printing - with up to 256 gradations. While First Copy Out Time has been reduced to 3 seconds.

### **Continuous output**

With automatic trayless duplexing as standard, the iR7200 experiences no drop in image reproduction, to increase productivity. An innovative 'heat pipe' water cooling mechanism suppresses temperature increases during continuous operation and reduces density variations.

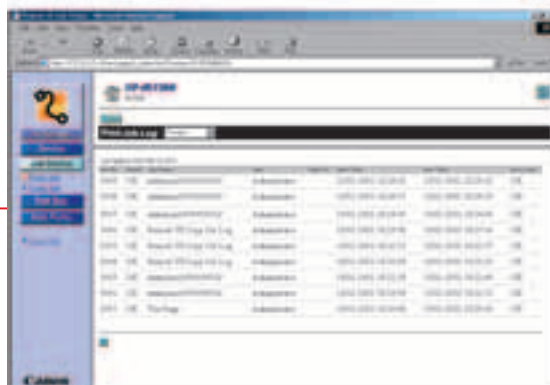
### **Powerful, productive image server**

The iR7200 is equipped with a standard 10 GB integrated Image Server. This provides extensive possibilities for high performance document handling, making data exchange within a network easier and more efficient.

It also enables copy reservation for up to 5 jobs - with almost no limit to the amount of images that can be scanned in continuously, via the job build functionality

### **True document integration**

Scanned documents and electronic files can be stored in a mailbox and password protected. Different file formats, such as Word documents and PowerPoint presentations, can be stored in the same box alongside scanned documents. They can then be merged, edited and printed out securely whenever required. Up to 100 mailboxes are available on the iR7200.





### Compact ease, complete reliability

A rigid structure and compact, space-saving durable design makes the iR7200 highly reliable. A large 16 cm colour LCD display with indicators for toner and staple supplies facilitates user friendly operation. Easy front operation allows toner and paper to be replenished during operation, while advanced paper transport technology reduces the risk of paper jams.

### Remote user interface (RUI)

A web-based remote user interface allows users to control operations directly from their workstations.

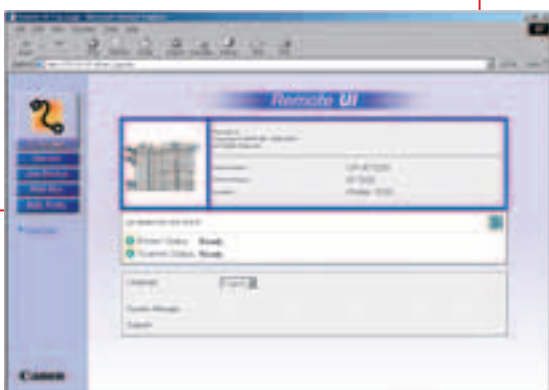
This provides easy job administration, with advanced mailbox operation, priority settings and a time-saving status check. Finishing procedures can be freely set. There's full PostScript and PCL support - plus users can create their own printing profiles.

### Full system with flexible finishing

Creative finishing options cover all needs. These include a Finisher for 100-sheet stapling and stacking, a Z-folding unit and a Saddle Finisher for professional production of A4 or A5 booklets - with automatic tab sheets insertion plus a tab sheet copying facility. The Saddle Finisher comes in two versions, with 2 or 4-hole punching for filing purposes. A cover insertion unit is also available.

### Complete Production Circle

Of course, these expert finishing options can be set directly from the desktop, via the RUI. The iR7200 system also features a high capacity paper supply of 7,650-sheets (4,150 sheets standard plus a 3,500-sheet optional paper deck). Thus completing the full production circle to provide an integral print-on-demand system for a broad range of applications.





- **Productive 72 ppm output (A4)**
- **Automatic trayless duplexing**
- **10 GB integrated Image Server**
- **100 high capacity mailboxes**
- **Compact and durable design**
- **Easy and reliable operation**
- **Large 7,650-sheet paper supply\***
- **Professional finishing options**

\* with paper deck accessory

# iR7200 Specifications

## Engine Specification

**Type:** Console

**Imaging System:** Laser Dry Electrostatic Transfer System

**Platen:** Fixed

**Copy Speed:** 72 cpm (A4)  
36 cpm (A3)

**Scan Speed:** 55 ppm

**Image Server Memory:** 10GB / HDD, 192MB / RAM

## Document Handling

**Document Size:** Max. A3 / 11" x 17"

**Paper Supply:** Top Drawer: 64 to 200 g/m<sup>2</sup>  
Cassette: 64 to 200 g/m<sup>2</sup>  
Stack Bypass: 64 to 200 g/m<sup>2</sup>

**Paper Feeding:** Dual top drawers and dual cassettes  
Stack Bypass

**Acceptable Originals:** Sheets, Books and the three dimensional objects  
(up to 2 Kg)

**Resolution:** 600 x 600 dpi  
Copy: 1200 x 600 dpi  
Print: 2400 x 600 dpi

**Toner:** Toner Cartridge 1,650 g (A4, 6% original approx. 33,000 sheets)

## Main Unit

**Dimensions (W x D x H):** 764 x 795 x 1171 (with DADF)

**Weight:** 273 Kg

**Power Supply:** 100V/50-60Hz, 208V/60Hz, 230V/50Hz

## Document Feeder

**Speed:** 55 Sheets/Minute (A4)

**Capacity:** 100 Sheets

## Paper Deck

**Paper Deck Capacity:** 3,500 Sheets (80 g/m<sup>2</sup>)

**Acceptable Paper Size:** A4, B5

## Finisher

**Tray:** Available Offset Size: A3, A4, A4R, A5R, B4, B5

**Paper Weight:** 64 g/m<sup>2</sup> to 200 g/m<sup>2</sup>

**Staple:** Max. Stapling Capacity: A4, B5; 100 Sheets  
A3, B4, A4R; 50 Sheets

**Paper Weight:** 64 g/m<sup>2</sup> to 200 g/m<sup>2</sup>

## Saddle Finisher

**Saddle Stitch:** Paper Size A3, A4R, B4

**Max. Stapling Capacity:** 15 Sheets

## Hole Punch

**2 Holes:** A3, A4, A4R, A5R, B4, B5

**4 Holes:** A3, A4

**Hole Diameter:** 6.5 mm

**Distance Between Holes:** 80 mm

## Paper Folding Unit

**Folding Method:** Roller Pressure Folding

**Fold Type:** Z-Fold

**Paper Size:** A3, B4

**Paper Weight:** 64 g/m<sup>2</sup> to 80 g/m<sup>2</sup>

## inserter

**Paper Size:** A3, A4, A4R, B4, B5

**Paper Weight:** 64 g/m<sup>2</sup> to 200 g/m<sup>2</sup>

## Optional Accessories

- N/W Multi-PDL Printer Kit-B2 • N/W Mutli-PDL Printer Unit-M1
- Finisher-K1/K1N • Saddle Finisher-K3N • Saddle Finisher-K4N
- Paper Folding Unit-C1 • Cover Insertion Unit-B1
- Paper Deck-M1 • DADF (W/Machine)

™All company and/or product names are trademarks and/or registered trademarks of their respective manufacturers in their markets and/or countries. Canon reserves the right to change specifications without notice.

# iR 7200



you can  
**Canon**

### Canon Inc.

30-2, Shimomaruko 3-Chome, Ohta-ku,  
Tokyo 146-8501, Japan  
[www.canon.com](http://www.canon.com)

Europe, Africa and Middle East

### Canon Europa N.V.

P.O. Box 2262, 1180 EG Amstelveen,  
the Netherlands  
[www.canon-europa.com](http://www.canon-europa.com)

English Edition 0030W276  
© Canon Europa N.V., 2002 (0502)

### Canon (U.K.) Limited

Woodhatch, Reigate  
Surrey RH2 8BF  
Telephone No: 01737 220000  
Facsimile No: 01737 220022  
[www.canon.co.uk](http://www.canon.co.uk)