

you can
Canon

iR 6800C
iR 6800CN


Multi Functional Printer

A brilliant new breakthrough
in black and white –
smart colour capability

The productive new black
and white Multi Functional
Printer that offers cost
effective use of colour.



iR 6800C/CN - Black and white business efficiency. With added colour capability.



Canon black and white Multi Functional Printers have always been the smart way for busy workgroups and departments to share information effectively, scan, send and professionally finish documents. Now they can do it all with smart colour too.

iR 6800C/CN - Canon's intelligent new way to work brilliantly in black and white and enjoy smart use of colour when you need it.



Network Ready

Select the model that suits your needs. The **iR 6800CN** comes fully network ready with a built-in PS/PCL/UFR printer board. Whilst the **iR 6800C** (copier only) can be connected to 3 different printer boards.*

Universal Send

Change the way your company communicates effortlessly and inexpensively. By turning the MFP into a communications hub it allows you to scan and share hard copy documents easily.

High productivity

68 black and white pages per minute (ppm) and 16 colour ppm. For fast black & white printing with smart colour capability on your network.

The new iR 6800C/CN Multi Functional Printer (MFP) brings the best of all worlds to a busy working environment. As a highly productive printer, copier and scanner, it simplifies the task of creating and distributing electronic and paper documents. As an intelligent digital tool, it can improve your network communications and save money through cost control.

A smarter way to work

The Canon iR 6800C/CN is a device that performs the work of many. So you can capture, manage and distribute documents electronically across your network and beyond. **As well as printing, scanning and copying, you have the option of intelligent sending and receiving of digitised documents to whoever needs them through the innovative Universal Send* function.**

Intelligent document distribution

Because the iR 6800C/CN is intelligent when linked to your network, you can scan in documents fast and send them to individual email addresses or mailboxes, a specific database or file server for storage, in black and white or colour. So you minimise the time, space and costs traditionally associated with filing and distributing paper documents. Don't worry about colour congesting your network. Canon's unique smart colour file compression reduces a 300 dpi file to approximately 10% of its original size.

Brilliant Results

The iR 6800C/CN combines Canon's outstanding black and white technology with the added value of colour. **For an amazingly cost effective budget, you can brighten up your business documents when and where you need to.** Just configure the versatile iR 6800C/CN to suit your business needs and finishing requirements. Then use its intelligence to enhance your business processes the easy way.





iR 6800C/CN - The perfect opportunity to add colour to black and white while keeping your printing costs under control

iR 6800C/CN

Making colour available. And keeping it affordable.

Your business documents are a reflection of your organisation. You can now add the power of colour to your documents to give them the impact they deserve. Better still, the iR 6800C/CN is smart enough to tell colour from black and white. So you only have to pay for colour when colour is used. And you can control who uses it and how often. Which gives you the option of smart colour documents when you need them, without the expense when you don't.

Control colour easily

Use Canon's ID management technology to set colour printing limits or quotas for different individuals - and avoid the spiralling costs of unauthorised usage.

Unusually for a colour capable black and white printer, the iR 6800C/CN also defaults* to black and white unless you specify colour. So you don't end up paying for colour when black and white is all you need. And with Canon's

Document Accounting Intelligence, you can even attribute print costs to specific clients and manage your budget more efficiently. An optional control system also helps manage usage through intelligent cards that must be inserted before access to the functions is given.

Apply colour intelligently

Imagine how much more impact your documents could have with a touch of colour. **Research† shows that information in colour can be located 70% faster and increases recall by over 80%.** Selective use of colour in black and white can have an even greater impact. Colour highlights improves information search time by 39% and colour on an invoice makes the recipient 30% more likely to pay. With smart use of colour on the documents your company produces, it wouldn't take your iR 6800C/CN very long to pay for itself.

Black and white durability with colour precision

For the first time Canon have built their highly durable a-Si drum into a colour capable printer for high speed, high volume mono printing. Print speed and economy is also enhanced by Canon's new Hybrid Process Engine which uses a separate compartment for black and colour printing. When smart colour is required, Canon's oil-less new colour S toner offers the ideal matt finish for your business documents, at an excellent 2400 x 600dpi equivalent print resolution. Brilliant colour when you need it, fast black and white when you don't.

There are lots of small ways for businesses to add colour smartly to their black and white documents.

Sales presentations can use colour to highlight key information that gets important messages across.

Tender documents can be made more effective by using colour in headings, charts and graphs.


Financial reports can use colour to emphasise key sections or significant figures and results.

Superior colour quality
Canon's 'S toner' technology produces eye catching colour and black and white documents. Better still, the oil-less matt finish allows users to mark up and edit printed documents easily by writing directly in pen on the page.



* Using printer unit D1, the device defaults to Automatic Colour Select

† Source: Case and Company Management Consultants, Maritz Motivation Inc and the Bureau of Advertising.



iR 6800C/CN - a giant leap forward for black and white document processing, for users who prefer small, easy steps

iR 6800C/CN



Use smart technology with total simplicity.

The iR 6800C/CN is simple to use either from the device itself or the user's desktop. Everything from scanning and sending to printing and finishing documents is achieved with minimum effort and maximum efficiency. As well as being easy to use, the iR 6800C/CN is simple for IT Managers to set up and configure in a way that best suits document processing requirements. It's the smart way to introduce cost effective colour to workgroups used to working in black and white.

Straightforward to operate

Use the large, familiar colour control panel to select functions and make adjustments easily at the touch of a button. Together with this the iR 6800C/CN offers many more features and additional benefits.

Clear menus give simple choices for copying, printing, scanning, sending and more complex editing or manipulation features. You don't have to stop to change the toner. The large black toner bottle can easily be changed while the iR 6800C/CN continues printing, increasing uptime and productivity.

Manage remotely – send and print securely

Using the Remote User Interface (RUI) with its web browser, the iR 6800C/CN can be accessed and managed by users at their workstations. This makes it easy to send confidential documents and files to personal mailboxes with individual passwords, ensuring confidentiality and printing security. This ability to send secured print jobs to a device is ideal for sensitive documents such as performance appraisals, CVs or legal and financial data. It keeps the information out of sight in the memory until the user is ready to print.

Improve productivity with faster document output

Take advantage of Canon's shorter, flatter paper path to accelerate document flow without compromising on quality. Use the smart colour capability to make finished documents that look outstanding, without needing to outsource them – or wasting time collating black and white and colour manually. **Print at a highly professional 68ppm in black and white and 16ppm in colour (A4 – single sided).** Beat your deadlines by using the high capacity optional paper decks to print continuously – using a variety of media sizes (up to A3+ with a maximum printable area of A3 full bleed printing on A3+ paper) and weights for different document requirements.

Save time

To save time and avoid keying errors, users can automatically access company e-mail addresses from the control panel using LDAP (Lightweight Directory Access Protocol) technology.

Use technology smartly

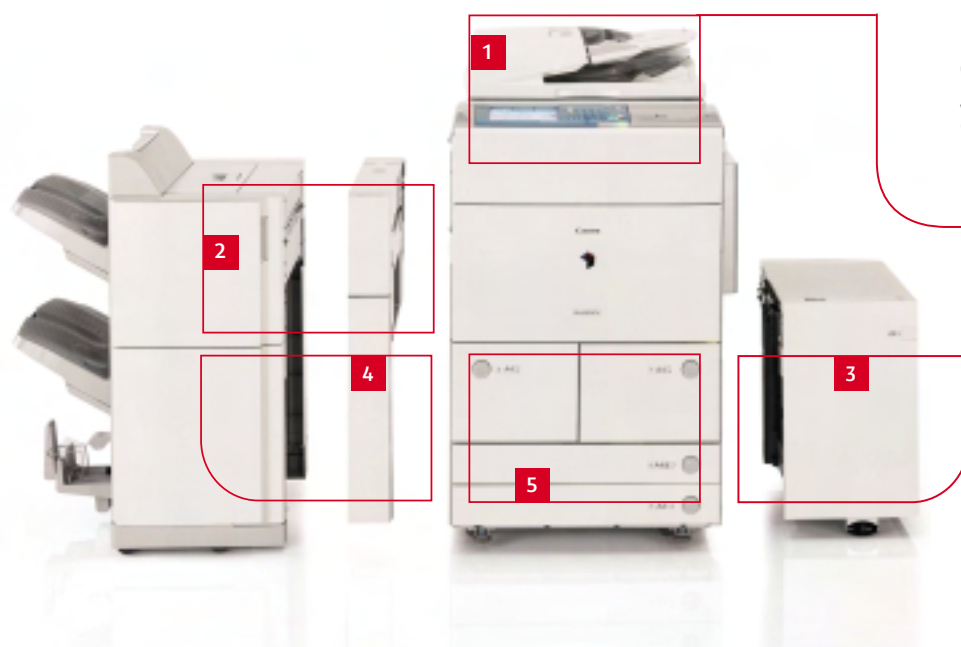
Initiate, preview and monitor jobs easily using Canon's familiar colour control panel and standard printer driver.

Eliminate outsourcing

By using the iR 6800C/CN you are able to print on demand, when and how you want it.



iR 6800C/CN - The perfect way to finish every document you start



- 1** Duplexing Automatic Document Feeder (DADF)
- 2** Saddle Finisher R2*
(Finisher R1* available)
- 3** Paper Deck*
- 4** Puncher Unit*
- 5** Cassettes / Decks

Business in black and white has never looked better.

Create documents from different applications

Do you ever struggle to put together complex documents to beat tight deadlines? Especially if they are being produced by different people and in different file formats. **With Canon's new, intelligent software, your struggle is over, whatever the size of your organisation or department.** Called iW Publishing Manager, it enables you to create documents by merging the component parts from different Windows-based applications (Word, Excel, PowerPoint, PDF etc) as a single electronic 'master' document. From this, you can not only edit and personalise but also finish and print it. Think of all the time that could be saved instead of collating complex documents by hand.

Improve your document workflow

Combining iW Publishing Manager with a smart colour 'capable' Canon Black and White printer increases and improves document flow throughout your organisation. The software is easy to use - it's as simple as clicking and dragging icons on screen. The new 'master' document created through iWPM is easily converted to PDF format, making it simple and versatile for sending and printing. Options such as stapling, making booklets and page numbering are available and once the document is collated, the finishing instructions are saved with the document for easy re-printing of any job.

Talking your network's language

You can print in any standard PCL and PostScript environments with the iR 6800C/CN. For even greater fluency of output, it also utilises **Canon's new UFR printing language** which minimises file processing time and significantly speeds up printing in Windows by sharing the processing load between the computer and the print device.

Twenty? Fifty? One hundred? How many people are creating documents in your company?

If every one of them could print those documents more quickly in black and white and colour collate and finish them automatically - all through a single hard working device - how many times more efficient would your business be?

By giving you flexible printing and brilliant finishing options, that's exactly what the iR 6800C/CN is able to do.

Default Black & White

The iR 6800C/CN defaults to black and white unless colour is selected, to avoid colour printing charges when you don't need them.

Affordable colour

Create high quality documents mixing colour and black and white without expensive outsourcing.

For a professional finish

Once the iR 6800C/CN has helped you scan, store, send and print documents electronically, the least it can do is finish them in style. Choose from a range of options that put the final professional touch to your brilliant black and white documents with smart colour when you need it. From collating, hole punching and multi position stapling to impressive saddle stitched booklets. The iR 6800C/CN also accommodates printing on tabs, transparencies and has a separate feed for covers. It supports paper stock up to 250gsm - ideal for report covers.

Smart finish

Choose from a host of finishing options that are available for impressive looking documents every time.



Staple



Group & Collate



Create Booklet



Hole Punch



Tab Printing



Duplexing

**Smart thinking that suits
every business environment**

Canon's aim is to create working solutions that are useful to your business, helpful to your people and friendly to the environment. As a commercial tool, we appreciate the importance of the iR 6800C/CN to your information workflow and do all we can to protect

your investment in it through the best support in the business. As a technological office device, we also recognise that the iR 6800C/CN must be able to help the business world without a cost to the natural world.

iR 6800C/CN - The smart
solution for anyone looking
to improve business
efficiency, saving money
and energy.





Another smart world first from Canon.

Canon's award winning design policy for business machines has enabled them to increase your business efficiency and still reduce harmful substances used in manufacture.

Enjoy more uptime

Canon designs its business devices to make complex tasks easy. Users with internet and network capabilities can realise the potential of the iR 6800C/CN without having to spend time becoming IT experts. If required, training can be provided on the device or any related software. For service support, our dedicated networks of technically qualified personnel are unrivalled in their ability to maximise workflow and minimise downtime. As well as on-line support, you have the option of e-Maintenance* – a proactive service tool maximising uptime allowing your organisation to have greater control of its assets.

Helping balance nature

As an energy saving resource, the iR 6800C/CN is ahead of its time. Designed to eliminate six key substances identified as harmful in the manufacturing process, this is the first IT based product in the world to comply to the new European Parliament RoHS (Restriction of Hazardous Substances) Directive. Compliance is not required until 2006 but Canon have designed the iR 6800C/CN as the model that sets the standard in the IT industry. The iR 6800C/CN has also earned a coveted Energy Star as a Multi Functional Printer and Copier.

Accounting Intelligently

Do you know how much print expenditure you can retrieve from clients? Are some of your printers idle and others too busy? Can your departments charge each other efficiently? Can you control all your print budgets from one source? These are just some of the issues that Canon Document Accounting Intelligence can help you resolve successfully. So you can keep your expenditure down while the quality of your output goes up, thanks to Canon's smart colour capability.

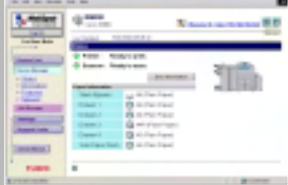
* Please check availability with your local Canon supplier

Easy to configure and control

For setting up and configuring, the iR 6800C/CN is the answer to an IT manager's prayers. It can be integrated seamlessly into your system. **Using Canon's Network Utilities enables you to set up, configure, manage and control Canon devices.**

So you can monitor one or many Canon MFPs and make the most of their print potential on your company or departmental networks. These utilities provide realtime access to information using a standard web browser, reducing time and administration for installation, monitoring and managing print on your network.

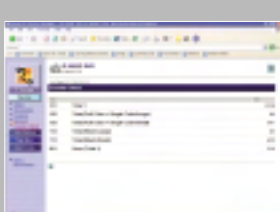
Canon's network device utilities for the iR 6800C/CN are:-



NetSpot Console



NetSpot Job Monitor



Remote User Interface

Other utilities

NetSpot Device Installer

NetSpot Resource Downloader

iR 6800C / iR 6800CN Specifications

Type	Console
Maximum Original Size	A3
Copy Sizes	
Cassette	A5R - A3,305x457mm, SRA3, 330x483mm
Stack Bypass	100x148.5mm - 330x483mm
Resolution	
Scanning	600dpi x 600dpi
Copying	600dpi x 600dpi
Printing	2400dpi equivalent x 600dpi
	256 Gradations
Copy/Print Speed	
A4	68 ppm B&W / 16 ppm full colour
A3	28 ppm B&W / 7.8 ppm full colour
First copy time	
Black-and-White	5.3 sec
Full Color	12.2sec
Warm-Up Time	8mins and 50secs or less
Multiple Copies/Prints	1 to 9,999 sheets
Duplexing	Standard automatic stackless
Paper weight	
Deck/Cassette	64 to 209g/m2
Stack Bypass	64 to 250g/m2
Duplex	
Colour	64 to 163g/m2
Black & White	64 to 209g/m2
Cassette	
Upper	2 Decks: A4
Lower	2 Universal Cassettes: (A5R to A3, 305x457mm, SRA3, 330x483mm)
Paper Capacity	
Standard	1500 sheets x2 Decks 1 & 2 (3000 sheets) 550 sheets x2 Cassettes 3 & 4 (1100 sheets) 100 Stack bypass
Optional	
Paper deck	3500 sheets
Total paper capacity	7,700 sheets
CPU	Canon Custom Processor, 250MHz x 2
Memory	768MB
Hard Disk Drive	40GB
Interface	Ethernet (100Base-TX/10Base-T)
Power Supply	230V/10A/50Hz
Power Consumption(W)	1.65 kW maximum
Dimensions (WxDxH)	679x852x1191mm
Weight	226kg
Colour Network Multi-PDL Printer Kit-C1 (Standard for iR 6800CN or Optional for iR 6800C)	
PDL	PCL5c, PostScript3 Emulation and UFR
Resolution	2400 equivalent x 600dpi
Memory	768MB (Uses Main unit RAM)
Hard Disk	40GB (Uses Main unit HDD)
CPU	Canon Custom Processor 250MHz x 2 (Uses Main unit CPU)
PS Fonts	Roman136
PCL Fonts	Roman80, Bitmap1, Barcode30, OCR2
Supported OS	
PCL	Windows 95/98/ME/NT4.0/2000/XP/2003
PS	Windows 95/98/ME/NT4.0/2000/XP/2003, Mac OSX10.2or later
	Windows 98/ME/NT4.0/2000/XP/2003
UFR	Mac OS8 or later
Mac-PPD	Mac OS8 or later
Interface	Ethernet(100Base-TX/10Base-T), TokenRing(Optional), USB(Optional), TCP/IP(LPD/FTP/Port9100/IPP/SMB), IPX/SPX(NDS, Bindery, NDP5-GW), AppleTalk
Network Protocol	
Pull Scan	Network TWAIN Driver (75 to 600dpi 24bit color/ 8bit grayscale/Black & white)
Colour Network Printer Unit-D1 (Optional)	
PDL	Adobe PostScript 3, PCL 5c
Resolution	2400 equivalent x 600dpi
Memory	128MB to 256MB(Optional)
Hard Disk	20GB
CPU	Intel Mobile PentiumIII 850MHz
PS Fonts	Roman138
PCL Fonts	Roman78 (including Barcode Fonts)
Supported OS	
PS	Windows 98/ME/NT4.0/2000/XP/2003, Mac OS9.0/X
PCL	Windows 95/98/ME/NT4.0/2000/XP/2003

Interface	IEEE1284, Ethernet(100Base-TX,10Base-T)
Network Protocol	TCP/IP(LPD/FTP/Port9100/IPP/SMB/email), IPX/SPX(NDS, Bindery, NDP5-GW), AppleTalk
Colour Universal Send Kit-C1 (Optional)	
Scan Speed	70 ipm: (A4 300dpi compressed PDF), 60 ipm (A4 300dpi, PDF & JPEG)
Scan Resolution	100dpi, 150dpi, 200x100dpi, 200dpi, 200x400dpi, 300dpi, 400dpi, 600dpi
Destinations	E-Mail/Internet FAX(SMTP), PC(SMB,FTP,NCP), iWDM
Address book	LDAP, Local(Max.1800)
File Format	
Single	TIFF, PDF
Multi	TIFF, JPEG, PDF
DADF(Standard)	
Paper size	A3-A5R
Paper weight	
Single sided original	42 to 128 g/m2
Double sided original	50 to 128 g/m2
Max. Number of originals	100 sheets (80 g/m2)
Document Scanning speed	50 ipm (A4, Colour/B&W 600dpi) 70 ipm (A4, Scan, 300dpi, Compressed PDF)
Paper Deck-U1 (Optional)	
Paper Size	A4
Paper Weight	64 to 209 g/m2
Paper Capacity	3,500 sheets (80 g/m2)
Dimensions (WxDxH)	326x593x574mm
Weight	Approx 31kg
Finisher-R1 (Optional)	
Number of trays	2 trays (+ optional tray 1)
Tray capacity	
A4-A5R	1000 sheets
A3	500 sheets
Staple position	Corner, Double
Staple capacity	
A4	50 sheets
A3	30 sheets
Dimensions (WxDxH)	536x657x928mm
Weight	Approx 40kg
Saddle Finisher-R2 (Optional)	
Number of trays	2 trays (+ optional tray 1)
Tray capacity	
A4-A5R	1000 sheets
A3	500 sheets
Staple position	Corner, Double, Saddle Stitch
Staple capacity	
A4	50 sheets
A3	30 sheets
Saddle Stitch Specifications	
Paper size	A3, A4R
Staple capacity	1 to 15 sheets (60pages, 64-80g/m2) 1 to 10 sheets(40pages, 81-105g/m2)
Paper weight	64 to 105g/m2 (64 to 250g/m2 for Cover page)
Dimensions (WxDxH)	648x657x928mm
Weight	Approx 68kg
Other Accessories	
Document Tray K1 • Additional Finisher Tray A1 • Puncher Unit -L1 (2 holes), N1/P1 (4 holes) Shift Tray C1 • Copy Tray K1 • Staple Cartridge-D3 (for Saddle stich) • Staple Cartridge-J1 Cassette-AA1 • Card Reader C1 • Card Reader Attachment Kit C1 • Resolution Switching Board-A2 • USB Interface board A3 (For USB port peer to peer printing) • Colour Network UFR Printer Kit-C1 • 128MB Option Memory Kit (for Printer-D1) • iR Security Kit • Token Ring N/W I/F Adapter iN-TR2 • Key Switch Unit - D2 • iW Publishing Manager Software	
Environment	Complaint with Energy Star 1st ROHS compliant product in the IT industry worldwide
Utilities	Netspot Device Installer • Netspot Console Netspot Job Monitor • Netspot Resource Downloader Remote User Interface • eMaintenance
Ozone less environment frame and parts use chromium free steel plates and screws.	
™ All company and/or product names are trademarks and/or registered trademarks of their respective manufacturers in their markets and/or countries. Canon reserves the right to change specifications without notice.	

you can
Canon



Canon Inc.
30-2, Shimomaruko 3-Chome, Ohta-ku,
Tokyo 146-8501, Japan
www.canon.com

Europe, Africa and Middle East
Canon Europa N.V.
P.O. Box 2262, 1180 EG Amstelveen,
the Netherlands
www.canon-europe.com

English Edition 0036W856
© Canon Europa N.V., 2004 (0604)



Conforms to the International
Energy Star program as an
MFP and Copier



Canon's GENUINE logo means
quality all-round performance



OFFICIAL PARTNER