

you can  
**Canon**

## iR 5800C

Multi Functional Printer

A brilliant new breakthrough  
in black and white –  
smart colour capability

The productive new black  
and white Multi Functional  
Printer that gives controlled  
use of colour.



# iR 5800C - Black and white business efficiency. With added colour capability.

Canon black and white Multi Functional Printers have always been the smart way for busy workgroups and departments to share information effectively, scan, send and professionally finish documents. Now they can do it all with the smart use of colour.

**iR 5800C** - The new way to work brilliantly in black and white and enjoy the smart use of colour when you need it.

iR 5800C



## Network Ready

Select the model that suits your needs. The **iR 5800C** is available in two versions. The **iR 5800CN** comes fully network ready with a built-in PS/PCL/UFPR printer board, for people who want colour control. The **iR 5800C** is available with an EFI printer board D1, for true PostScript giving greater colour control.

## Universal i-Send

Change the way your company communicates effortlessly and inexpensively. By turning the MFP into a communications hub it allows you to scan and share hard copy documents easily.

## High productivity

58 black and white pages per minute (ppm) and 16 colour ppm. For fast black & white printing with smart colour capability on your network.

The new iR 5800C Multi Functional Printer (MFP) brings the best of all worlds to a busy working environment. As a highly productive printer, copier and scanner, it simplifies the task of creating and distributing electronic and paper documents. As an intelligent digital tool, it can improve your network communications and save money through cost control.

## A smarter way to work

The Canon iR 5800C is a device that performs the work of many. So you can capture, manage and distribute documents electronically across your network and beyond. **As well as printing, scanning and copying, you have the option of intelligent sending and receiving of digitised documents to whoever needs them through the innovative Universal I-Send\* function.**

## Intelligent document distribution

**When the iR 5800C is linked to your network, you can scan in documents fast and pull them back to your desktop. With the optional I-send\* you can send scanned documents to e-mail addresses or mailboxes, a specific database or file server for storage, in black and white or colour.** So you minimise the time, space and costs traditionally associated with filing and distributing paper documents. Don't worry about colour congesting your network. Canon's unique smart colour file compression reduces a 300 dpi file to approximately 10% of its original size.

## Brilliant Results

The iR 5800C combines Canon's outstanding black and white technology with the added value of colour. **For an amazingly cost effective budget, you can brighten up your business documents when and where you need to.** Just configure the versatile iR 5800C to suit your business needs and finishing requirements. Then use its intelligence to enhance your business processes the easy way.







**iR 5800C** - The perfect opportunity to add colour to black and white while keeping your printing costs under control.

iR 5800C

# Making colour available. And keeping it affordable.

Your business documents are a reflection of your organisation. You can now add the power of colour to your documents to give them the impact they deserve. Better still, the iR 5800C can tell colour from black and white. So you only have to pay for colour when colour is used. And you can control who uses it and how often. Which gives you the option of smart colour documents when you need them, without the expense when you don't.

### Control colour easily

**Use Canon's ID management technology to set colour printing limits or quotas for different individuals - and avoid the spiralling costs of unauthorised usage.** Unusually for a colour capable black and white printer, the iR 5800C also defaults\* to black and white unless you specify colour. So you don't end up paying for colour when black and white is all you need. And with Canon's **Document Accounting Intelligence**, you can even attribute print costs to specific clients and manage your budget more efficiently. An optional control system also helps manage usage through intelligent cards that must be inserted before access to the functions is given.

### Apply colour intelligently

Imagine how much more impact your documents could have with a touch of colour. **Research† shows that information in colour can be located 70% faster and increases recall by over 80%.** Selective use of colour in black and white can have an even greater impact. Colour highlights improves information search time by 39% and colour on an invoice makes the recipient 30% more likely to pay. With smart use of colour on the documents your company produces, it wouldn't take your iR 5800C very long to pay for itself.

### Black and white durability with colour precision

**For the first time Canon have built their highly durable a-Si drum into a colour capable printer for high speed, high volume mono printing. Print speed and economy is also enhanced by Canon's new Hybrid Process Engine which uses a separate compartment for black and colour printing.** When smart colour is required, Canon's oil-less new colour S toner offers the ideal matt finish for your business documents, at an excellent 2400 x 600dpi equivalent print resolution. Brilliant colour when you need it, fast black and white when you don't.

There are lots of small ways for businesses to add colour smartly to their black and white documents.

**Sales presentations** can use colour to highlight key information that gets important messages across.

**Tender documents** can be made more effective by using colour in headings, charts and graphs.

**Financial reports** can use colour to emphasise key sections or significant figures and results.

**Superior colour quality** Canon's 'S toner' technology produces eye catching colour and black and white documents. Better still, the oil-less matt finish allows users to mark up and edit printed documents easily by writing directly in pen on the page.



\* Using printer unit D1, the device defaults to Automatic Colour Select  
† Source: Case and Company Management Consultants, Maritz Motivation Inc and the Bureau of Advertising.



**iR 5800C** - a giant leap forward for black and white document production, for users who prefer small, easy steps.

iR 5800C

## Use smart technology with total simplicity.

The iR 5800C is simple to use either from the device itself or the user's desktop. Everything from scanning and sending to printing and finishing documents is achieved with minimum effort and maximum efficiency. As well as being easy to use, the iR 5800C is simple for IT Managers to set up and configure in a way that best suits document processing requirements. It's the easy way to introduce cost effective colour to workgroups used to working in black and white.

### Straight forward to operate

Use the large, familiar colour control panel to select functions and make adjustments easily at the touch of a button. Together with this the iR 5800C offers many more features and additional benefits. **Clear menus give simple choices for copying, printing, scanning, sending and more complex editing or manipulation features. You don't have to stop to change the toner. The large black toner bottle can easily be changed while the iR 5800C continues printing, increasing uptime and productivity.**

### Manage remotely – send and print securely

**Using the Remote User Interface (RUI) with its web browser, the iR 5800C can be accessed and managed by users at their workstations.** This makes it easy to send confidential documents and files to personal mailboxes with individual passwords, ensuring confidentiality and printing security. This ability to send secured print jobs to a device is ideal for sensitive documents such as performance appraisals, CVs or legal and financial data. It keeps the information out of sight in the memory until the user is ready to print.

### Improve productivity with faster document output

Take advantage of Canon's shorter, flatter paper path to accelerate document flow without compromising on quality. Use the colour capability to make finished documents that look outstanding, plus reduce outsourcing - or wasted time collating black and white and colour manually. **Print at a highly professional 58ppm in black and white and 16ppm in colour (A4 – single sided).** Beat your deadlines by using the high capacity optional paper decks to print continuously – using a variety of media sizes (up to A3+ with a maximum printable area of A3 full bleed printing on A3+ paper) and weights for different document requirements.

### Save time

To save time and avoid keying errors, users can automatically access company e-mail addresses from the control panel using LDAP (Lightweight Directory Access Protocol) technology.

### Use technology smartly

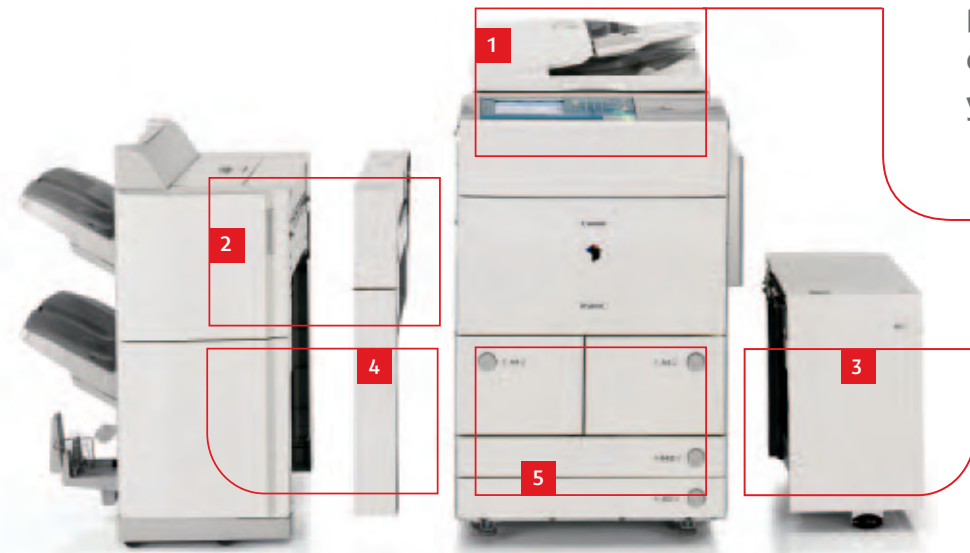
Initiate, preview and monitor jobs easily using Canon's familiar colour control panel and standard printer driver.

### Increase productivity

With print volumes doubling every 5 years\* speed of document output is increasingly important. With the iR 5800C you are able to print on demand fast.

\* Source IDC





**iR 5800C - The perfect way to finish every document you start.**

- 1 Duplexing Automatic Document Feeder (DADF)**
- 2 Saddle Finisher R2\***  
(Finisher R1\* available)
- 3 Paper Deck\***
- 4 Puncher Unit\***
- 5 Cassettes / Decks**

## Business in black and white has never looked better.

### Create documents from different applications

Do you ever struggle to put together complex documents to beat tight deadlines? Especially if they are being produced by different people and in different file formats. **With Canon's new, simple to use software, your struggle is over, whatever the size of your organisation or department.** Called iW Publishing Manager, it enables you to create documents by merging the component parts from different Windows-based applications (Word, Excel, PowerPoint, PDF etc) as a single electronic 'master' document. From this, you can not only edit and personalise, but also finish and print it. Think of all the time that could be saved instead of collating complex documents by hand.

### Improve your document workflow

Combining iW Publishing Manager with a smart colour 'capable' Canon Black and White printer increases and improves document flow throughout your organisation. The software is easy to use - it's as simple as clicking and dragging icons on screen. The new 'master' document created through iWPM is easily converted to PDF format, making it simple and versatile for sending and printing. Options such as stapling, making booklets and page numbering are available and once the document is collated, the finishing instructions are saved with the document for easy re-printing of any job.

### Talking your network's language

You can print in any standard PCL and PostScript environments with the iR 5800C. For even greater fluency of output, it also utilises **Canon's new UFR printing language** which minimises file processing time and significantly speeds up printing in Windows by sharing the processing load between the computer and the print device.

For set up and configuring, the iR 5800C is the answer to an IT manager's prayers. It can be assembled to suit your system seamlessly. It comes in two versions. The iR 5800CN with its own built in print controller or the iR 5800C with true postscript EFI printer board D1.

**Twenty? Fifty? One hundred? How many people are creating documents in your company?**

If every one of them could print those documents more quickly in black and white and colour, collate and finish them automatically - all through a single hard working device - how many times more efficient would your business be?

By giving you flexible printing and brilliant finishing options, that's exactly what the iR 5800C is able to do.

### Default Black & White

The iR 5800C defaults to black and white unless colour is selected, to avoid colour printing charges when you don't need them.

### Affordable colour

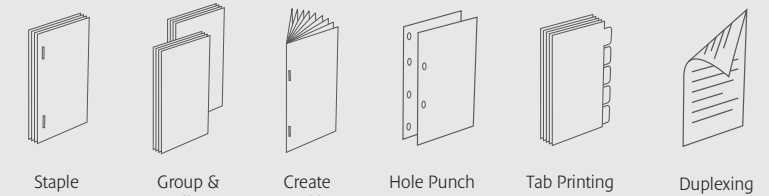
Create high quality documents mixing colour and black and white without the need for two devices.

### For a professional finish

Once the iR 5800C has helped you scan, store, send and print documents electronically, the least it can do is finish them in style. Choose from a range of options that put the final professional touch to your brilliant black and white documents with smart colour when you need it. From collating, hole punching and multi position stapling to impressive saddle stitched booklets. The iR 5800C also accommodates printing on tabs, transparencies and has a separate feed for covers. It supports paper stock up to 250gsm - ideal for report covers.

### Great finish

Choose from a host of finishing options that are available for impressive looking documents every time.





## Smart thinking that suits every business environment

Canon's aim is to create working solutions that are useful to your business, helpful to your people and friendly to the environment. As a commercial tool, we appreciate the importance of the iR 5800C to your information workflow and do all we can to protect

your investment in it through the best support in the business. As a technological office device, we also recognise that the iR 5800C must be able to help the business world without a cost to the natural world.

**iR 5800C** - The smart solution for anyone looking to improve business efficiency, saving money and energy.

iR 5800C

# Another smart world first from Canon.

Canon's award winning design policy for business machines has enabled them to increase your business efficiency and still reduce harmful substances used in manufacture.



### Enjoy more uptime

Canon designs its business devices to make complex tasks easy. Users with internet and network capabilities can realise the potential of the iR 5800C without having to spend time becoming IT experts. If required, training can be provided on the device or any related software. For service support, our dedicated networks of technically qualified personnel are unrivalled in their ability to maximise workflow and minimise downtime. As well as on-line support, you have the option of e-Maintenance\* – a proactive service tool maximising uptime allowing your organisation to have greater control of its assets.

\* Please check availability with your local Canon supplier

### Helping balance nature

**As an energy saving resource, the iR 5800C is ahead of its time. Designed to eliminate six key substances identified as harmful in the manufacturing process, this is the first IT based product in the world to comply to the new European Parliament ROHS (Restriction of Hazardous Substances) Directive.** Compliance is not required until 2006 but Canon have designed the iR 5800C as the model that sets the standard in the IT industry. The iR 5800C has also earned a coveted Energy Star as a Multi Functional Printer and Copier.

### Accounting Intelligently

Do you know how much print expenditure you can retrieve from clients? Are some of your printers idle and others too busy? Can your departments charge each other efficiently? Can you control all your print budgets from one source? These are just some of the issues that Canon Document Accounting Solutions can help you resolve successfully. So you can keep your expenditure down while the quality of your output goes up, thanks to Canon's Black & White with smart colour products.

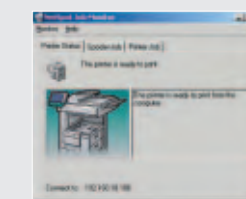
### Easy to configure and control

For setting up and configuring, the iR 5800C is the answer to an IT manager's prayers. It can be integrated seamlessly into your system. **Using Canon's Network Utilities enables you to set up, configure, manage and control Canon devices.** So you can monitor one or many Canon MFPS and make the most of their print potential on your company or departmental networks. These utilities provide realtime access to information using a standard web browser, reducing time and administration for installation, monitoring and managing print on your network.

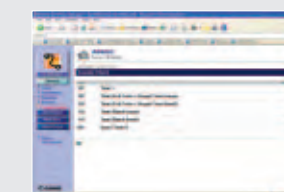
### Canon's network device utilities for the iR 5800C are:-



#### NetSpot Console



#### NetSpot Job Monitor



#### Remote User Interface

#### Other utilities

- NetSpot Device Installer
- NetSpot Resource Downloader

# Specifications **ir 5800C/CN**

Type	Console
Maximum Original Size	A3
Copy Sizes	Cassette: A5R - A3, 305 x 457mm, SRA3, 330 x 483mm Stock Bypass: 100 x 148.5mm - 330 x 483mm
Resolution	Scanning: 600dpi x 600dpi Copying: 600dpi x 600dpi Printing: 2,400dpi equivalent x 600dpi 256 Gradations
Copy Print Speed	A4 58 ppm B&W 16 ppm full colour A3 28 ppm B&W 7.8 ppm full colour
First-copy Time	5.3 sec. B&W 12.2 sec. Full Colour
Warm-up Time	530 sec or less (or you can say 8 min and 50 sec or less)
Multiple Copies/Prints	1 to 9,999 sheets
Duplexing	Standard automatic stackless
Paper weight	Cassette: 64 to 209 g/m2 Stack Bypass: 64 to 250 g/m2 Duplexing 64 to 209 g/m2 for B&W, 64 to 163 g/m2 for Colour
Cassette	Upper: A4 Lower: Universal: (A5R to A3, 305 x 457mm, SRA3, 330 x 483mm)
Paper Capacity	Standard 1500 sheets x 2 Drawers 1 & 2 (3000 sheets) 550 sheets x 2 Drawers 3 & 4 (1100 sheets) 100 Stack bypass Optional Paper deck: 3500 sheets Total paper capacity: 7,700 sheets Canon Custom Processor, 250MHz x 2
CPU	768MB
Memory	40GB
Hard Disk Drive	Ethernet (100 Base-TX/10 Base-T)
Interface	230V/10A/50Hz
Power Supply	1.65 kW maximum
Power Consumption	679 x 852 x 1191 mm
Dimensions (WxDxH)	226kg
Weight	
<b>COLOUR NETWORK MULTI-PDL PRINTER KIT-C1</b>	
PDL	PCL5c, Postscript 3 Emulation and UFR
Resolution	2400 equivalent x 600dpi
Memory	768MB (Uses Main unit RAM)
Hard Disk	40GB (Uses Main unit HDD)
CPU	Canon Custom Processor 250MHz x 2 (Uses Main unit CPU)
PS Fonts	Roman136
PCL Fonts	Roman80, Bitmap1, Barcode30, OCR2
Supported OS	PCL: Windows98/ME/NT4.0/2000/XP/2003 PS: Windows98/ME/NT4.0/2000/XP/2003, Mac OS X (10.2or later) UFR: Windows 98/ME/2000/XP/2003 Mac-PPD: Mac OS8 or later
Interface	Ethernet(100Base-TX/10Base-T), TokenRing(Optional), USB(Optional)
Network Protocol	TCP/IP(LPD/FTP/Port9100/IPP/SMB), IPX/SPX(NDS, Bindery, NDPS-GW), AppleTalk
Pull Scan	Network TWAIN Driver (75 to 600dpi 24bit color /8bit grayscale/Black & white)
<b>COLOUR NETWORK PRINTER UNIT-D1 V2 (STANDARD FOR ir 5800C)</b>	
PDL	Adobe PostScript 3, PCL 5c
Resolution	2400 equivalent x 600dpi
Memory	128MB to 256MB (Optional)
Hard Disk	20GB
CPU	Intel Mobile PentiumIII 850MHz
PS Fonts	Roman 136
PCL Fonts	Roman 113 (including Barcode Fonts)
Supported OS	PS: Windows 98/ME/NT4.0/2000/XP/2003, Mac OS9.0/X (10.2or later) PCL: Windows 95/98/ME/NT4.0/2000/XP/2003 IEEE1284, Ethernet(100Base-TX, 10Base-T)
Interface	TCP/IP (LPD/FTP/Port9100/IPP/SMB/email), IPX/SPX
Network Protocol	(NDS, Bindery, NDPS-GW), AppleTalk

<b>COLOUR UNIVERSAL SEND KIT-C1 (OPTIONAL)</b>	
Scan Speed	70 ipm: A4 300dpi
Scan Resolution	100dpi, 150dpi, 200 x 100dpi, 200dpi, 200 x 400dpi, 300dpi, 400dpi, 600dpi
Destinations	E-Mail/Internet FAX (SMTP), PC (SMB,FTP,NCP), iWDM
Address Book	LDAP, Local (Max.1800)
File Format	Single TIFF, PDF Multi TIFF, JPEG, PDF
<b>DADF (STANDARD)</b>	
Paper Size	A3 - A5R
Paper Weights	Single sided original: 38 to 128 gsm Double sided original: 50 to 128 gsm
Max. Number of originals	100 sheets (80 g/m2)
Document Scanning speed (max.)	50 ipm (A4), (Colour/B&W 600dpi)
<b>PAPER DECK-U1 (OPTIONAL)</b>	
Paper Size	A4
Paper Weight	64 to 209 g/m2
Paper Capacity	3,500 sheets (80 g/m2)
Dimensions (W x D x H)	326 x 593 x 574 mm
Weight	Approx.31 kg
<b>FINISHER-R1 (OPTIONAL)</b>	
Number of trays	2 tray (+ optional tray 1)
Tray capacity	A4-A5R :1000 sheets A3: 500 sheets Corner, Double
Staple position	A4: 50 sheets
Staple capacity	A3: 30 sheets
Dimensions	536 x 657 x 928mm
Weight	Approx. 40kg
<b>SADDLE FINISHER-R2 (OPTIONAL)</b>	
Number of trays	2 tray (+ optional tray 1)
Tray capacity	A4-A5R :1000 sheets A3: 500 sheets Corner, Double, Saddle Stitch
Staple position	A4: 50 sheets
Staple capacity	A3: 30 sheets
Saddle Stitch Specifications	Paper size: A3, A4R Staple capacity: 1 to 15 sheets (60 pages, 64-80 g/m2) 1 to 10 sheets(40pages, 81-105g/m2) Paper weight: 64 to 105g/m2 (64 to 250g/m2 for Cover page) 648 x 657 x 928mm
Dimensions	Approx. 68kg
Weight	
<b>OTHER ACCESSORIES</b>	
Document Tray K1 Additional Finisher Tray A1 Puncher Unit - L1(2 holes),N1/P1( 4 holes) Shift Tray C1 Copy Tray K1 Staple Cartridge - D3 (for Saddle stitch) Staple Cartridge - J1 Card Reader C1 Card Reader Attachment Kit C1 Resolution Switching Board-A2 USB Interface board A3 (For USB port peer to peer printing) Colour Network UFR Printer Kit - C1 128MB Option Memory Kit (for Printer-D1) ir Security Kit - A1 Token Ring N/W I/F Adapter iN - TR2 IW Publishing Manager Software	
<b>OTHER FEATURES</b>	
ID Management	
Secure Printing	
Environment	Compliant with Energy Star ROHS compliant
Utilities	Netspot Device Installer • Netspot Console Netspot Job Monitor • Netspot Resource Downloader • Remote User Interface eMaintenance*
* Please check availability with your local Canon supplier	

Some images are simulated for clarity of reproduction. All data is based on Canon's standard testing methods. This leaflet and the specifications of the product have been developed prior to the date of product launch. Final specifications are subject to change without notice.™ and ®: All company and/or product names are trademarks and/or registered trademarks of their respective manufacturers in their markets and/or countries.

you can  
**Canon**



**Canon Europa N.V.**  
P.O. Box 2262, 1180 EG Amstelveen,  
the Netherlands  
[www.canon-europe.com](http://www.canon-europe.com)

English Edition 0045W379  
© Canon Europa N.V., 2004 (0604)

**Canon (UK) Ltd**  
Woodhatch, Reigate  
Surrey RH2 8BF  
Telephone No: 08000 353535  
Facsimile No: 01737 220022  
[www.canon.co.uk](http://www.canon.co.uk)



Conforms to the International  
Energy Star program as an  
MFP and Copier

**Canon Ireland**  
Arena Road, Sandford Industrial Estate  
Dublin 18, Ireland  
Telephone No: 01-2052400  
Facsimile No: 01-2958141  
[www.canon.ie](http://www.canon.ie)



Canon's GENUINE logo means  
quality all-round performance



**CHAMPIONS  
LEAGUE**

OFFICIAL SUPPLIER