

you can  
**Canon**

**iR1610F**  
**iR2010F**  
office intelligence

*Let digital flexibility  
lighten your workload*



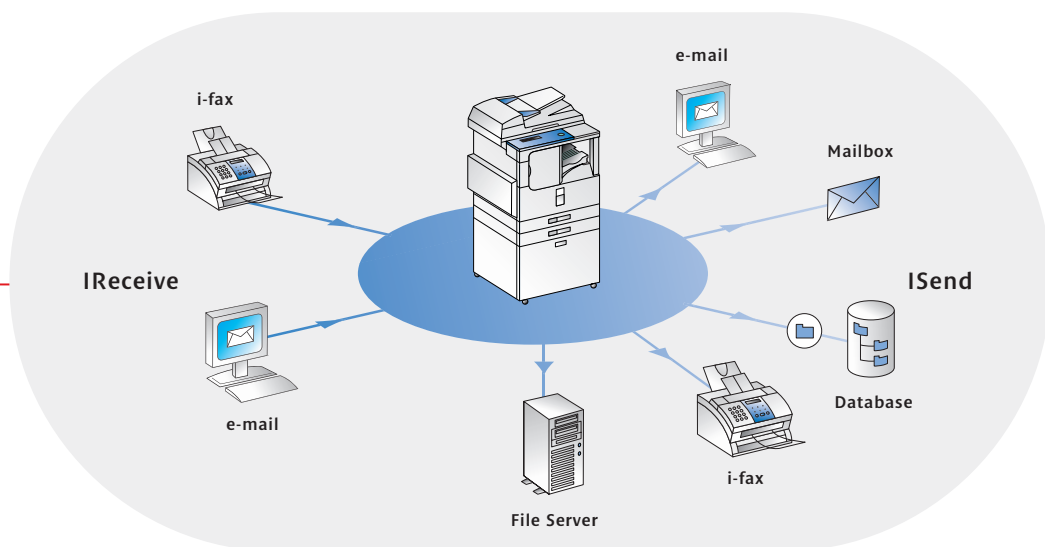
*Copy, fax, scan, print ...  
with digital power it's your choice*

Start with high-quality digital copying and faxing as standard. Then add on scanning and network printing to give your business an added advantage. Thanks to a unique modular design the choice is yours, with Canon's new compact and highly cost-effective systems. Select the iR1610F for 16 ppm document output – or the more powerful iR2010F for 20 ppm productivity.

You also benefit from an innovative range of networked, intelligent features to speed up and simplify your entire workflow. You can collect, share, manage and store all your documents digitally. Thus saving time and cutting down on filing, forwarding and paper costs - to increase office efficiency. What's more, whatever your requirements, the system's flexible design makes it easy to adapt to your specific business applications and changing business needs.



## *Network printing with an intelligent workflow*



### PRODUCTIVE PRINT OPTION

Transform your iR1610F/iR2010F into a fast and flexible network printer for all your staff, simply by adding on Canon's optional print and networking capability. Your business benefits from professional print productivity. Plus you can print on a wide range of media, with full finishing support. Print resolution rises to an extra high 2400 x 600 dpi with Canon's AIR smoothing technology. While optional PostScript™ emulation is available to fully optimise your printing output.

addresses... using Canon's unique intelligent sending capability. They can even be sent to a file server for storage. Increasing productivity and helping to reduce your hard copy costs. You can also receive and route all incoming information so that it can be captured, shared and worked on by all authorised users on the network. So document distribution is more efficient, flexible and faster than ever before.

### INTELLIGENT COMMUNICATION

The network/print capability allows you to take full advantage of intelligent features – making management of all your electronic documentation far easier. Super G3 fax functionality speeds up communication, with advanced features such as multiple sending. Documents can also be scanned into your system for direct distribution to i-fax and email

## Ensuring ease... all the way



### DELIVERING SUPERIOR DIGITAL COPYING

Both the iR1610F and the iR2010F models deliver high definition, digital copying - at speeds of 16 and 20 ppm respectively. Reliable output is matched by consistently high copy quality - even for the finest text and most complex charts. Mixed-sized documents can be fed directly in the ADF (standard Automatic Document Feeder) to add to convenience.

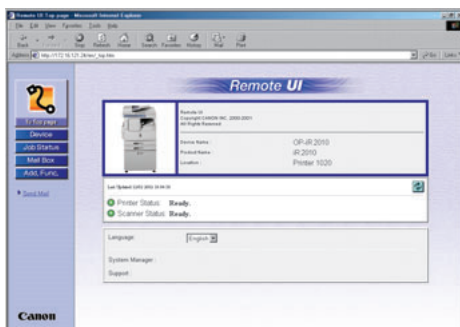
Super G3 faxing, with a range of advanced functions, is also supported as a standard feature - enhancing overall office productivity.

### SIMPLICITY AND RELIABILITY

Welcome to effortless and reliable operation - whether for copying, printing, scanning or faxing. There is a large and clear control panel featuring special 'short-cut' buttons for extra ease. What's more, when the system is connected to a network, a remote user interface allows smooth, seamless handling of all print jobs direct from every desktop.

### FLEXIBLE FINISHING OPTIONS

There are two productive and space-saving finishing options: a built-in finisher offering sorting and stapling functions - as well as an inner 2-way tray that automatically separates out all your copies and prints. Finishing is supported direct from connected desktops, to increase efficiency even further.



## SELECT THE SMARTEST SOLUTIONS

As a leading IT provider, Canon supplies far more than just suitable hardware. Our Business Intelligence skills enable us to provide a wide range of software and service solutions – customised to meet all your precise applications and specific needs. By fully integrating your document, print and network management systems, we can show you how to achieve more streamlined and extremely cost-effective office operations. You decide exactly what you want, we are ready to deliver practical solutions.

## READY FOR THE FUTURE

By combining a highly versatile system with flexible and supported solutions, we enable you to secure a maximum return on your investment while reducing total cost of ownership. Our aim is to deliver a total solution offering immediate benefits in terms of increased productivity... with built-in versatility to meet all your future needs, as your business grows. Thus ensuring that your company has a truly competitive advantage – both in the short and long term.





## iR1610F/iR2010F Specifications

<b>Base Specification</b>	
<b>Type:</b> desktop type	<b>One Touch Dial:</b> 63 locations
<b>Copying System:</b> laser dry electrostatic transfer system	<b>Coded Speed Dial:</b> 137
<b>Platen:</b> fixed	<b>Group Dial:</b> 199
<b>Originals:</b> paper sheet, books and three-dimensional objects up to 2 kg	<b>Send (Optional)</b>
<b>Copy Speed:</b> 16ppm (iR1610F) 20ppm (iR2010F)	<b>Send to:</b> e-mail, G3 Fax, iFax, FTP
<b>Maximum Original Size:</b> A3	<b>File Format:</b> TIFF (MH/MR/MMR), PDF Vers 1.3
<b>Copy Sizes:</b> A6-A3	<b>No of Addresses:</b> 200
<b>Scanning Resolution:</b> 600 x 600 dpi/256 levels	<b>Sending Resolution:</b> 200x100dpi, 200x200dpi, 200x400dpi; 400x400dpi
<b>Printing Resolution:</b> 1,200 x 600 dpi (copy), 2,400 x 600 dpi (PDL print)	<b>Printing (Optional)</b>
<b>Zoom:</b> 50%-200% (1% increments)	<b>Processor:</b> Power PC405 200MHz RISC processor
<b>FCOT:</b> 8.2 sec. approx.	<b>RAM:</b> 8MB (Up to 72MB)
<b>Warm-up Time:</b> 30 sec. or less	<b>PDL:</b> PCL5e /PCL6 (PS3 – optional)
<b>Multiple Copies:</b> 1-99	<b>Resolution:</b> 600 x 600 dpi, 256 Tones (up 2,400 x 600 dpi with AIR)
<b>Dimensions (W x D x H):</b> 615 x 631 x 662 mm iR1610F; 615 x 631 x 747 mm iR2010F	<b>Printing Speed:</b> 16ppm/20ppm
<b>Weight:</b> 44 kg iR1610F, 50.5 kg iR2010F	<b>Paper Size:</b> up to A3
<b>Power Consumption:</b> 940 W or less	<b>Hard Disk:</b> 10GB (optional)
<b>Paper:</b> 60 to 90 g/m <sup>2</sup> cassette) 60 to 128MB g/m <sup>2</sup> (bypass)	<b>Network Connectivity (Optional)</b>
<b>Input Capacity:</b> 250 sheets x 1 iR1610F, 250 sheets x 2 iR2010F, bypass capacity 100 sheets	<b>Topology:</b> USB, Parallel, Ethernet (10/100BaseTX) (optional)
<b>Paper Options:</b> optional cassettes: up to 250 x 2 iR2010F, up to 250 x 3 iR1610F, finisher, 2 way inner tray, ADF	<b>Network Protocol:</b> TCP/IP (LPD/LPR), IPX/SPX (Pserver/NDS/Rprinter/Nprinter), AppleTalk (PAP)
<b>Image Memory:</b> 16MB standard, up to 80MB (optional)	<b>Supported OS:</b> Windows® 95/98/NT4.0/2000/ME/XP, Mac OS 7.5 or later, Solaris 1.1x, 2.5 or later
<b>Fax</b>	
<b>Modem:</b> 33.6Kbps	<b>Optional Accessories</b>
<b>Compression:</b> MR, MH, MMR, JBIG	finisher • inner 2 way tray • 32/64MB memory expansion • card reader
<b>Scanning Speed:</b> approx. 1 sec/page	• cassette feeding module (1 tray) • 2 tray iR 2010F only • 3 tray iR1610F only • pedestal • printer board • ethernet network interface adapter • Postscript module • hard disk • Flash ROM module
<b>ADF Capacity:</b> 50 pages A4	
<b>Fax Memory:</b> 2MB standard (up to 57MB optional memory upgrade)	



you can  
**Canon**

**Canon Inc.**  
30-2, Shimomaruko 3-Chome, Ohta-ku,  
Tokyo 146-8501, Japan  
[www.canon.com](http://www.canon.com)

Europe, Africa and Middle East  
**Canon Europa N.V.**  
P.O. Box 2262, 1180 EG Amstelveen,  
the Netherlands  
[www.canon-europa.com](http://www.canon-europa.com)

English Edition 0031W079  
© Canon Europa N.V., 2002 (0802)

**Canon (U.K.) Limited**  
Woodhatch, Reigate  
Surrey RH2 8BF  
Telephone No: 01737 220000  
Facsimile No: 01737 220022  
[www.canon.co.uk](http://www.canon.co.uk)



iR1610/2010F

™ All company and/or product names are trademarks and/or registered trademarks of their respective manufacturers in their markets and/or countries. Canon reserves the right to change specifications without notice.